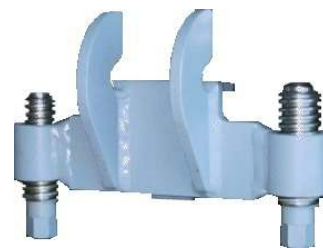




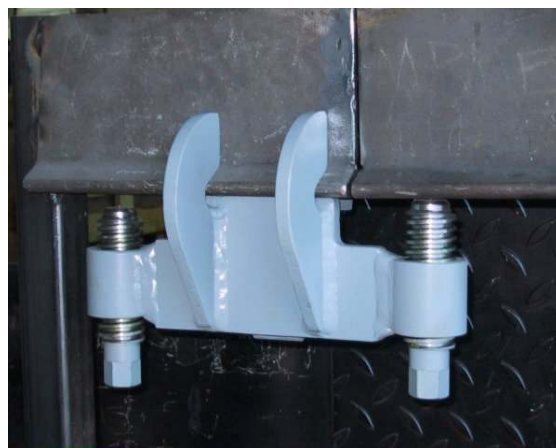
MINIPALMEK



MINIPALMEK is a tool for aligning stiffeners at the section joint. Model 1A suits for 100...120 mm bulb flats and model 1B for 140...160 mm flats. It can be used in righthand and lefthand instances.

Working sequence

1. Remove possible burrs from the section ends
2. Attach MINIPALMEK to the section in higher position by using the wedge.
3. Align the sections in lateral direction by using a hammer or prybar
4. Align the sections in vertical direction by using the vertical screw (can be used by pneumatic impact driver, wrench size 22 mm)
5. Insert the ceramic backing with tape
6. Lay the weld



Make sure that the screws are lightly greased at all times. This will prevent the welding spatter from adhering to MINIPALMEK.

MINIPALMEK 1B can be used on bulb flats up to 140...160 mm sizes, provided that the force of the screw is sufficient. If not, please use the bigger tool PALMEK and a hydraulic jack.

The best efficiency is achieved, when a fitter and welder are working as a team and have a sufficient amount of MINIPALMEKs available.

Warranty: The manufacturer, Craftmer Oy, is granting a 12 months warranty for MINIPALMEK TR tools, calculated from the sales date. The warranty is covering claims related to damages to the tool and pertaining to material faults and mistakes in production. The warranty does not cover indirect losses or damages or damages due to wrong use or overloading of the MINIPALMEK tool.

Manufacturer: **Craftmer Oy**
 FINLAND
 craftmer@craftmer.fi
 www.craftmer.fi